

WASHINGTON

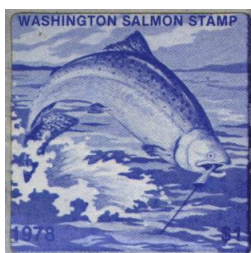
TABLE OF CONTENTS

WA-1S	Salmon Stamp – 1 Day	106
WA-S	Salmon Stamp – Annual Resident	106
WA-3SN	Salmon Stamp – Non-Resident 3-Day	106
WA-SN	Salmon Stamp – Annual Non-Resident	106
WA-2S	Salmon 2-Day Combination	107
WA-ST	Sturgeon Stamp	107
WA-2ST	2-Day Combination – Sturgeon Only	107
WA-FF	Resident Personal Use Food Fish	107
WA-FFN	Non-Resident Personal Use Food Fish	108
WA-HC	Resident Hood Canal Shrimp	108
WA-HCN	Non-Resident Hood Canal Shrimp	108
WA-RZ	Resident Razor Clam	109
WA-RZN	Non-Resident Razor Clam	109
WA-CL	Razor Clam License	109
WA-RF	Recreational Fisheries Enhancement Stamp	109
WA-1CB	1 Day Charter Stamp	109
WA-2FS	2-Day Fishing and Shellfish License	109
WA-SC	Washington State Sportsmen’s Council	109
WA-TI	Washington Wild Trout	110

Washington no longer issues any fishing stamps.

Salmon Stamp – 1 Day (WA-1S)

Permitted resident fishing 1 day for salmon. Self-adhesive, no serial numbers.

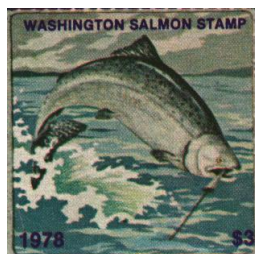


1	1978 \$1, Salmon leaping, blue [Claudessa Carter]	7	3
2	1979 \$1, Salmon pair, brown	7	3
3	1980 \$1, Salmon swimming upstream, red	7	3
4	1981 \$1, Salmon pair leaping, green	7	3
5	1982 \$1, Sockeye Salmon, brown	7	3
6	1983 \$1, Leaping salmon, blue	6	3
7	1984 \$1, Salmon pair, red-orange	6	3
8	1985 \$1, Anglers with catch, green	6	3
9	1986 \$1, Coho Salmon pair, violet	6	3
10	1987 \$1, Salmon feeding, blue	6	3

Series ended

Salmon Stamp – Annual Resident (WA-S)

Permitted annual fishing for salmon by residents. Self-adhesive, no serial numbers.



1	1978 \$3, Salmon leaping, multi [Claudessa Carter]	7	3
---	--	---	---

2	1979 \$3, Salmon pair, multicolored	7	3
3	1980 \$3, Salmon swimming upstream, multi	7	3
4	1981 \$3, Salmon pair leaping, multicolored	7	3
5	1982 \$3, Sockeye Salmon, multicolored	6	3
6	1983 \$3, Leaping salmon, multicolored	6	3
7	1984 \$3, Salmon pair, multicolored	6	3
8	1985 \$3, Anglers with catch, multicolored	6	3
9	1986 \$3, Coho Salmon pair, multicolored	6	3
10	1987 \$3, Salmon feeding, multicolored	6	3

Change to rectangular format

11	1988 \$3, Salmon feeding [Mark Davis]	6	3
12	1989 \$3, Salmon & boat [Fred Thomas]	6	3

Change to smaller square

13	1990 \$3, Salmon, multicolored	8	3
14	1991 \$4, Salmon eggs, multicolored	6	3
15	1992 \$4, Salmon feeding, multicolored	6	3

Change back to rectangle with bottom tab added

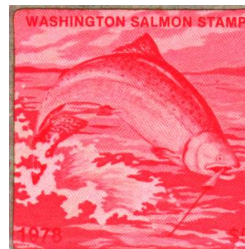


16	1993 \$4, Four salmon [Alex Young]	6	3
----	------------------------------------	---	---

Series ended

Salmon Stamp – Non-Resident 3 Day (WA-3SN)

Permitted non-resident fishing 3 days for salmon. Self-adhesive, no serial numbers.



1	1978 \$5, Salmon leaping, red [Claudessa Carter]	11	5
2	1979 \$5, Salmon pair, blue	11	5
3	1980 \$5, Salmon swimming upstream, brown	11	5
4	1981 \$5, Salmon pair leaping, orange	11	5
5	1982 \$5, Sockeye Salmon, blue	11	5
6	1983 \$5, Leaping salmon, green	7	5
7	1984 \$5, Salmon pair, dark red	9	5
8	1985 \$5, Anglers with catch, orange	9	5
9	1986 \$5, Coho Salmon pair, blue	7	5
10	1987 \$5, Salmon feeding, orange	7	7

Series ended

Salmon Stamp – Annual Non-Resident (WA-SN)

Permitted annual fishing for salmon by non-residents. Self-adhesive, no serial numbers.

